





STHWELL HALL

First College of Education













Disclaimer of Liability
 This drawing is provided for informational purposes only and on an "as is" basis. Cleveland State University does not warrant the accuracy, correctness, reliability, comprehensiveness, or currency of any content. It is the responsibility of the user of this data to verify all information in the field.

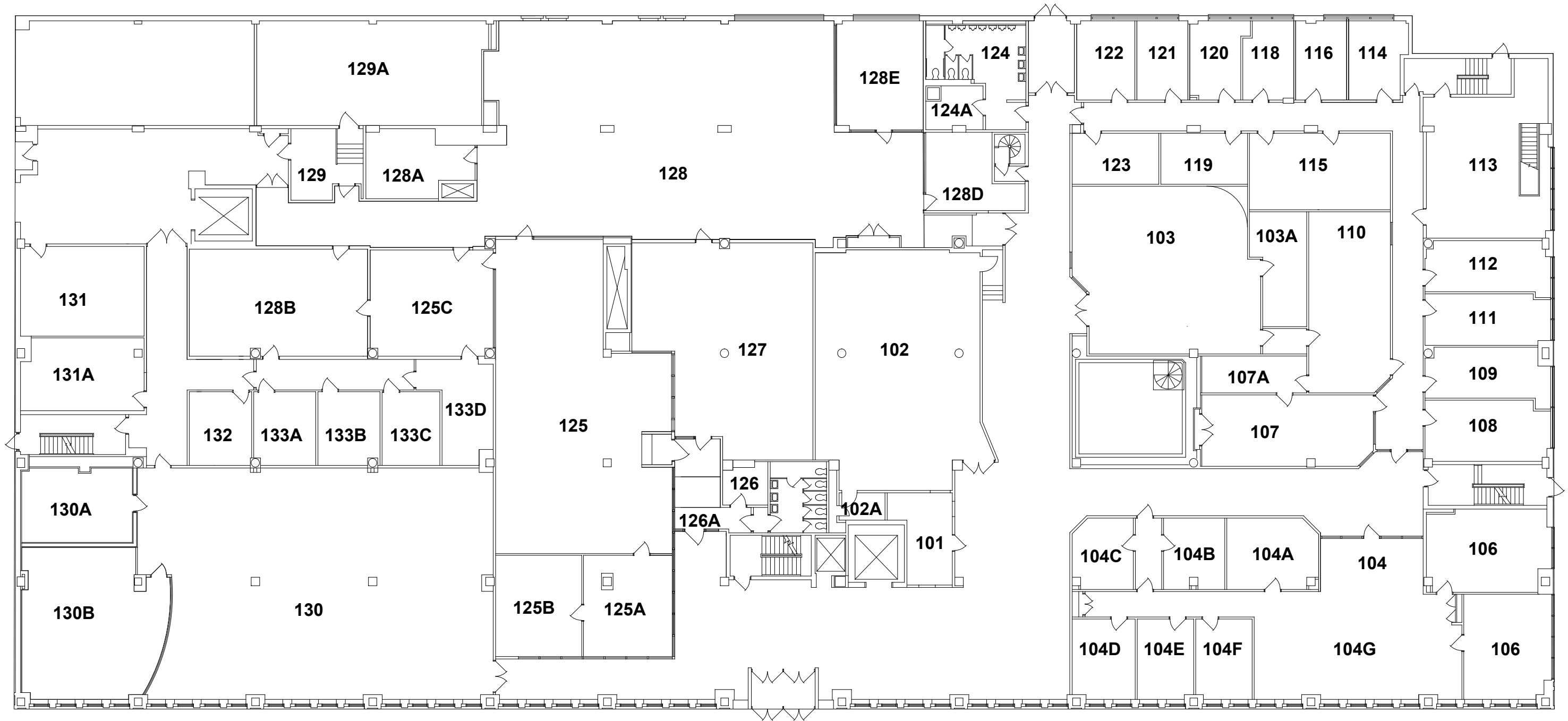
The recipient of this data shall indemnify, defend and hold harmless Cleveland State University and its officers, directors, partners, agents, members and employees from and against any and all demands, claims, damages to persons or property, losses and liabilities, including reasonable attorneys' fees (collectively "Claims") arising out of or caused by the recipient's or its members negligence in connection with the use of this information.



NORTH 	SCALE: 	BACKGROUND FLOOR PLAN
		STILWELL HALL
DATE REVISED 05/12/2011	REVISED BY C.COLON	REVIEWED BY ---
		SH-B BUILDING PLAN 1 OF 5

Disclaimer of Liability
 This drawing is provided for informational purposes only and on an "as is" basis. Cleveland State University does not warrant the accuracy, correctness, reliability, comprehensiveness, or currency of any content. It is the responsibility of the user of this data to verify all information in the field.

The recipient of this data shall indemnify, defend and hold harmless Cleveland State University and its officers, directors, partners, agents, members and employees from and against any and all demands, claims, damages to persons or property, losses and liabilities, including reasonable attorneys' fees (collectively "Claims") arising out of or caused by the recipient's or its members negligence in connection with the use of this information.



NORTH 	SCALE: 	BACKGROUND FLOOR PLAN
		STILWELL HALL
DATE REVISED	REVISED BY	REVIEWED BY
05/12/2011	C.COLON	---
		SH-01
		BUILDING PLAN 2 OF 5

Disclaimer of Liability
 This drawing is provided for informational purposes only and on an "as is" basis. Cleveland State University does not warrant the accuracy, correctness, reliability, comprehensiveness, or currency of any content. It is the responsibility of the user of this data to verify all information in the field.

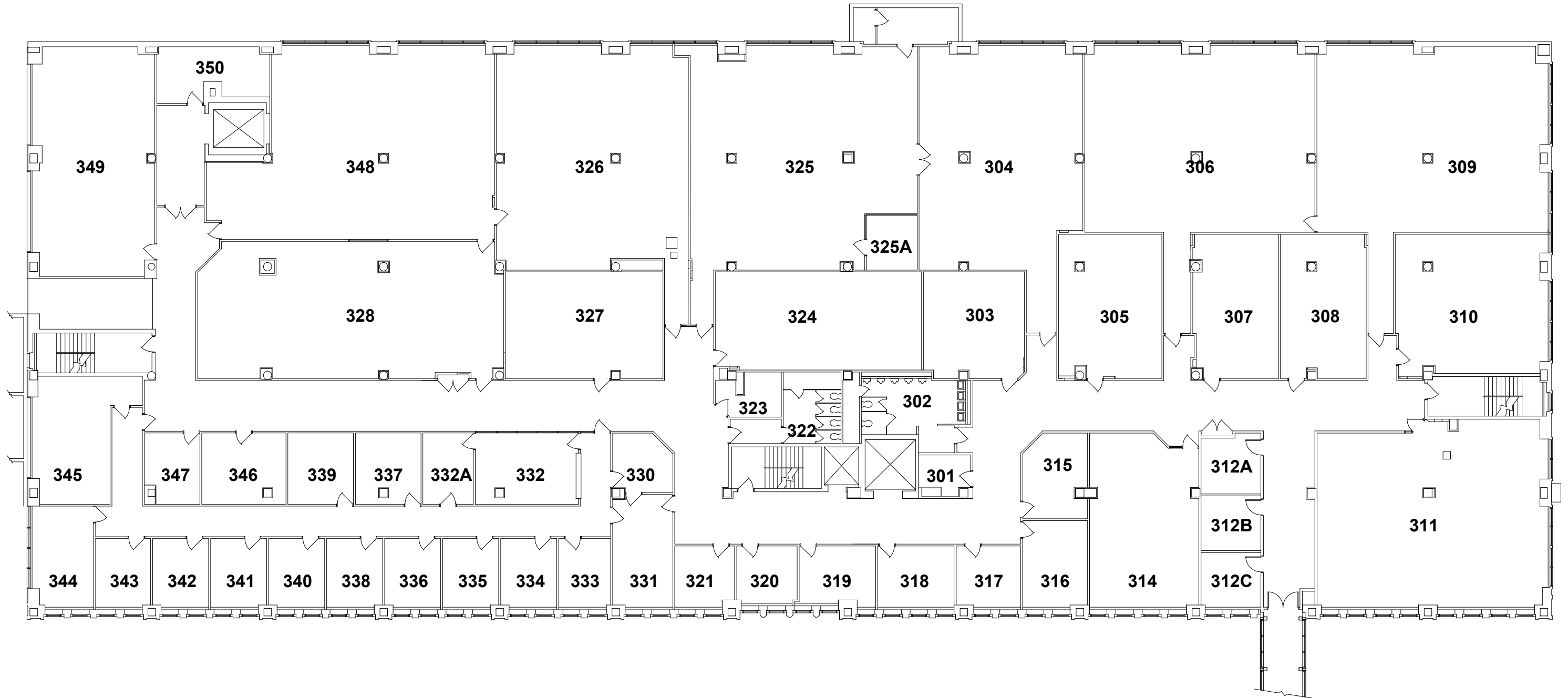
The recipient of this data shall indemnify, defend and hold harmless Cleveland State University and its officers, directors, partners, agents, members and employees from and against any and all demands, claims, damages to persons or property, losses and liabilities, including reasonable attorneys' fees (collectively "Claims") arising out of or caused by the recipient's or its members negligence in connection with the use of this information.

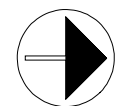
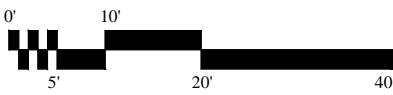


NORTH 	SCALE: 	BACKGROUND FLOOR PLAN
		STILWELL HALL
DATE REVISED 05/12/2011	REVISED BY C.COLON	REVIEWED BY ---
		SH-02
		BUILDING PLAN 3 OF 5

Disclaimer of Liability
 This drawing is provided for informational purposes only and on an "as is" basis. Cleveland State University does not warrant the accuracy, correctness, reliability, comprehensiveness, or currency of any content. It is the responsibility of the user of this data to verify all information in the field.

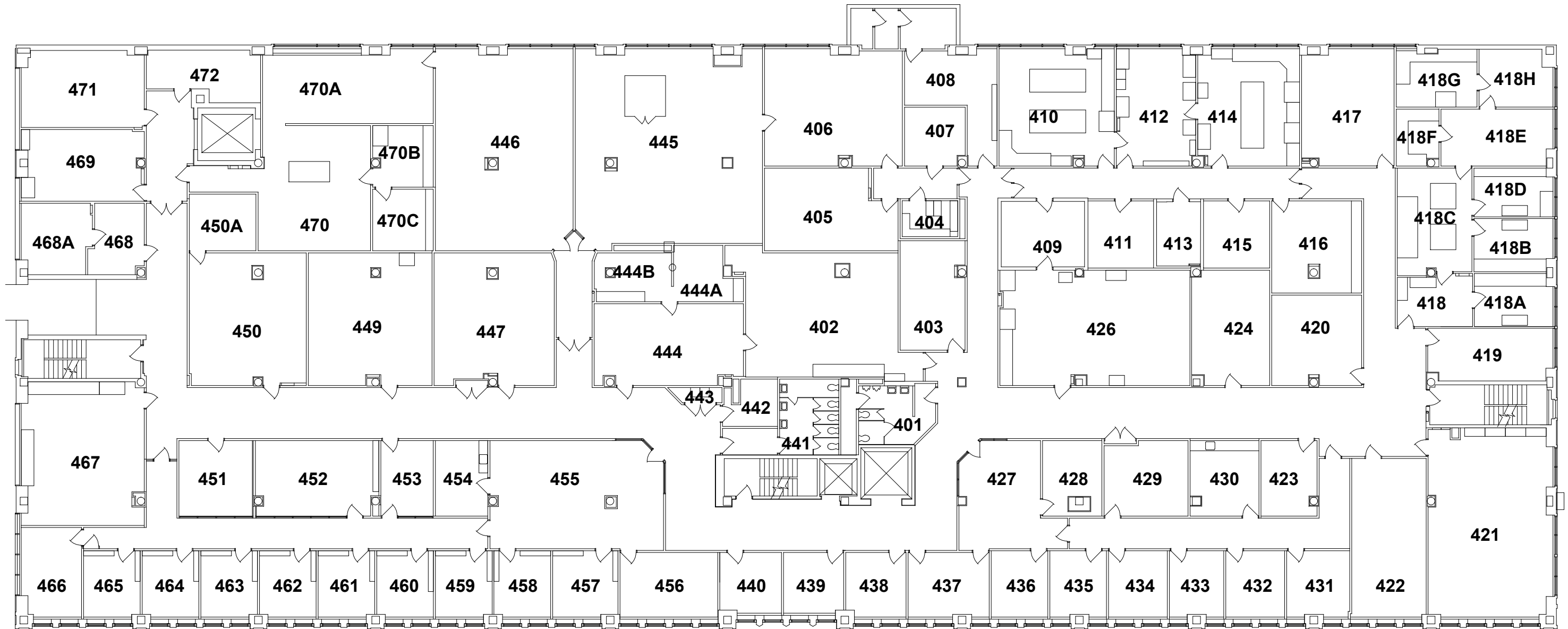
The recipient of this data shall indemnify, defend and hold harmless Cleveland State University and its officers, directors, partners, agents, members and employees from and against any and all demands, claims, damages to persons or property, losses and liabilities, including reasonable attorneys' fees (collectively "Claims") arising out of or caused by the recipient's or its members negligence in connection with the use of this information.



 NORTH	SCALE: 	BACKGROUND FLOOR PLAN	
		STILWELL HALL	
DATE REVISED		REVISOR	REVIEWED BY
05/12/2011		C.COLON	---
			SH-03
BUILDING PLAN 4 OF 5			

Disclaimer of Liability
 This drawing is provided for informational purposes only and on an "as is" basis. Cleveland State University does not warrant the accuracy, correctness, reliability, comprehensiveness, or currency of any content. It is the responsibility of the user of this data to verify all information in the field.

The recipient of this data shall indemnify, defend and hold harmless Cleveland State University and its officers, directors, partners, agents, members and employees from and against any and all demands, claims, damages to persons or property, losses and liabilities, including reasonable attorneys' fees (collectively "Claims") arising out of or caused by the recipient's or its members negligence in connection with the use of this information.



NORTH 	SCALE: 	BACKGROUND FLOOR PLAN
		STILWELL HALL
DATE REVISED 05/12/2011	REVISED BY C.COLON	REVIEWED BY ---
		SH-04
		BUILDING PLAN 5 OF 5



NAGLE-POOR
MOVING & STORAGE
CLEVELAND, OH.
(216)-946-9300

NAGLE-POOR
MOVING & STORAGE
CLEVELAND, OH.
(216)-946-9300

HAMMERMILL
MAKING YOUR WORK LOOK BETTER





NO FOOD OR BEVERAGES
NOT PERMITTED IN THIS ROOM





Gas Absorption



- 1) 3 sheets of paper
- 2) 1 ft tape
- 3) No pencils
- 4) No tape on egg
- 5) Egg will be easily accessible







Books by Fenn College of Engineering Faculty



Welcome Today's Fenn College of Engineering Special Event
www.csobio.edu/engineering

VIRGINIA

START HERE!

Celebrates Diversity & Inclusion



















By order of
Environmental Safety
This sink MUST BE
flushed Each We

Air Pollution



DON'T BLOCK
EYEWASH

Y
E
K



ATTENTION









ENGINEERING DEAN'S OFFICE ←
STUDENT SERVICES ←
NEW & TRANSFER STUDENT ADVISING ←
COOPERATIVE EDUCATION ←
SH 104

→ CIVIL ENGINEERING
→ SHUGA CONFERENCE ROOM
SH 107-123

75th ANNIVERSARY
in
Engineering Education

WELCOME TO
CIVIL & ENVIRONMENTAL ENGINEERING

EWB CSU ASCE

UPCOMING MEETING
IMPORTANT NOTICE
WILL BE
POSTED SOON.

THE PLAIN DEALER





Two large bulletin boards are mounted on the left wall. The one on the left is orange and the one on the right is green. They are decorated with various papers, notices, and small images. Above the bulletin boards, several framed pictures or certificates are hanging on the wall.

CAUTION
EYE PROTECTION
REQUIRED
IN THIS AREA

FOOD OR
BEVERAGES
NOT PERMITTED
IN THIS ROOM



NOTICE
No open flames or smoking
allowed in this area.

447

EXIT

Stilwell Hall Exterior Issues



The Ohio Motors Co. Building

From 1924 to 1959, Stilwell Hall was the Ohio Motors Co. building. It was the site of a dealership which sold and serviced Buick automobiles in downtown Cleveland. Later, a Lincoln-Mercury dealership operated out of the building. This photograph was taken in 1937.

